



CUSTOM KOI POND DESIGN PACKAGE

DESIGNED FOR
CUSTOMER NAME
CUSTOMER ADDRESS

SHEET INDEX

- CS1 COVER SHEET
- A1 POND DIMENSIONS
- A2 POND CONTOUR
- A3 SUCTION PLUMBING
- A4 RETURN PLUMBING
- D1 DETAILS
- D2 DETAILS
- E1 ELECTRICAL

**TO PRINT OR DOWNLOAD PDF DESIGN PLANS AND
VIEW PRODUCT SPECIFICATIONS GO TO
sacramentokoi.com/design/#####**



Everyone at Sacramento Koi would like to thank you very much for trusting us to assist in the designing of your dream koi pond. With over 20 years of experience, we are here to help you throughout the entire building process. We can answer any questions you might have concerning equipment installation, pond start-up, and even selecting koi.

Please keep in mind that oftentimes well-meaning contractors or friends, may suggest shortcuts or modifications to the design plans in an effort to save you money or speed up the construction process. We encourage you to think very carefully before allowing any changes to the design. Be assured that every aspect of your pond has been carefully thought out including the pipe size, jet placement, skimmer placement, filter, pump, UV, contour and many other aspects. The entire pond has been designed to work as one cohesive system with the equipment that is specified. A seemingly small change could have a real negative impact on the finished pond. If you or the contractor have any questions or desire to deviate from the plans and/or equipment, please don't hesitate to call us first. There is a reason behind every choice that was made on your pond. We are very confident that if you take the time to follow the provided plans closely and install the right equipment, the pond of your dreams will become a reality.

Thank you again for choosing Sacramento Koi to assist you with your new pond.

Steve Walker,

President of Sacramento Koi

P.S. Remember, If you choose to purchase all the listed items in the equipment package you will receive a \$1,000 discount. Adjustments or deletions to the recommended equipment package may disqualify you from receiving this discount.

REVISIONS

DESCRIPTION

Sacramento
Koi

DESIGNED BY

STEVE WALKER
4670 PACIFIC STREET SUITE #200
ROCKLIN, CA 95677
(916) 345-3761
www.Sacramentokoi.com

CUSTOMER
CUSTOMER NAME

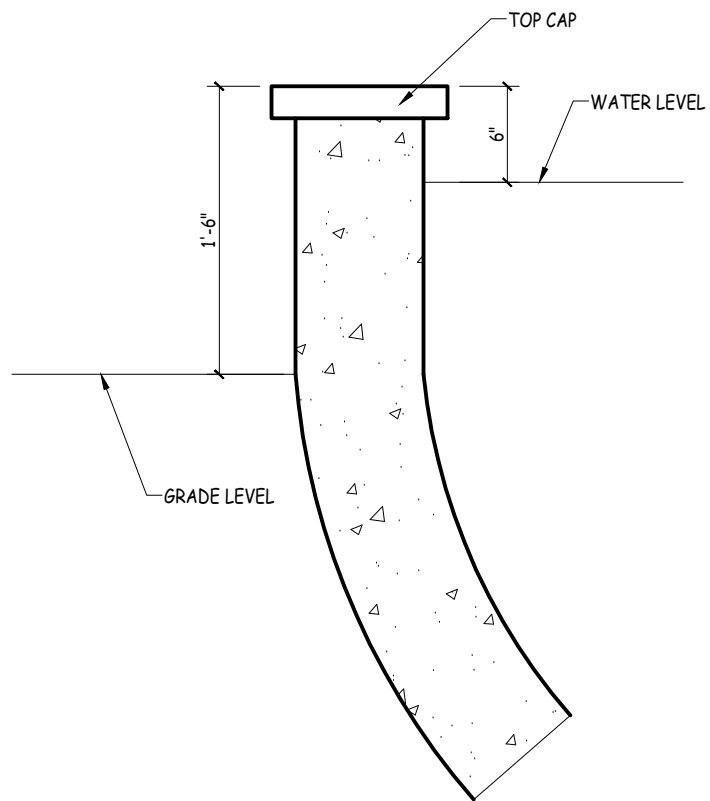
SHEET NAME

COVER SHEET

DRAWING DATE
08-22-2022

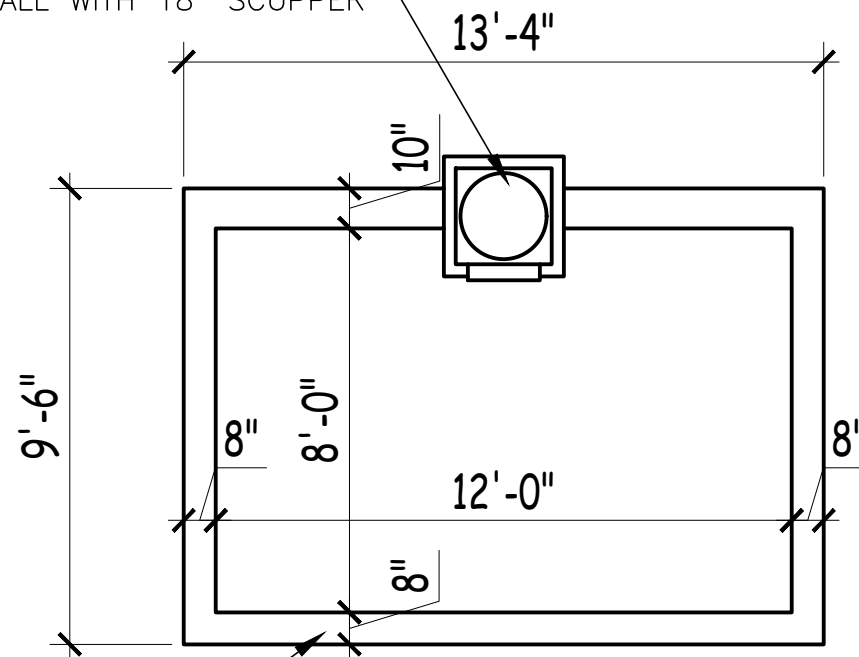
SHEET NUMBER

CS1



10 TYPICAL RASIED POND
1" = 1'-0"

20" ROUND BALL TO SIT IN BOX AND SERVE
AS A WATERFALL WITH 18" SCUPPER



8" THICK WALL ON FRONT AND SIDES (TYP)

POND DIMENSIONS
1/4" = 1'-0"

REVISIONS

DESCRIPTION

--	--



DESIGNED BY
STEVE WALKER
4670 PACIFIC STREET SUITE #200
ROCKLIN, CA 95677
(916) 345-3761
www.Sacramentokoi.com

CUSTOMER
CUSTOMER NAME

SHEET NAME

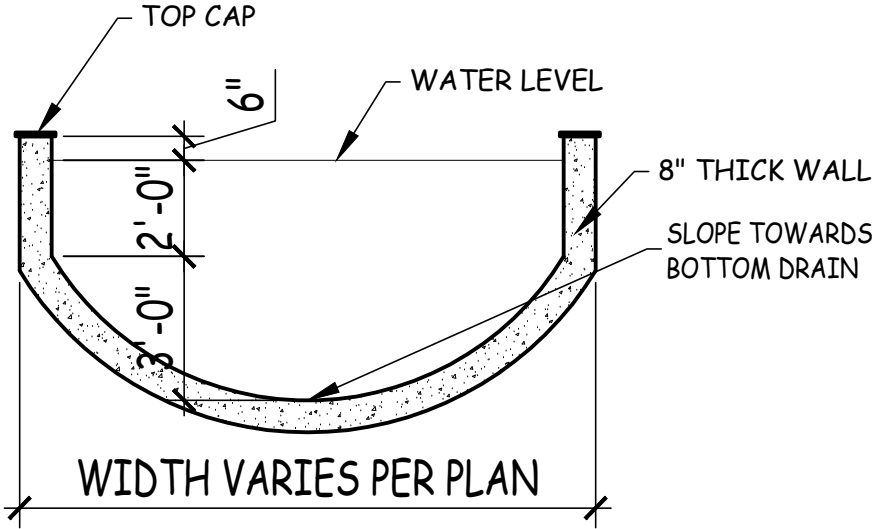
POND DIMENSIONS

DRAWING DATE
08-22-2022

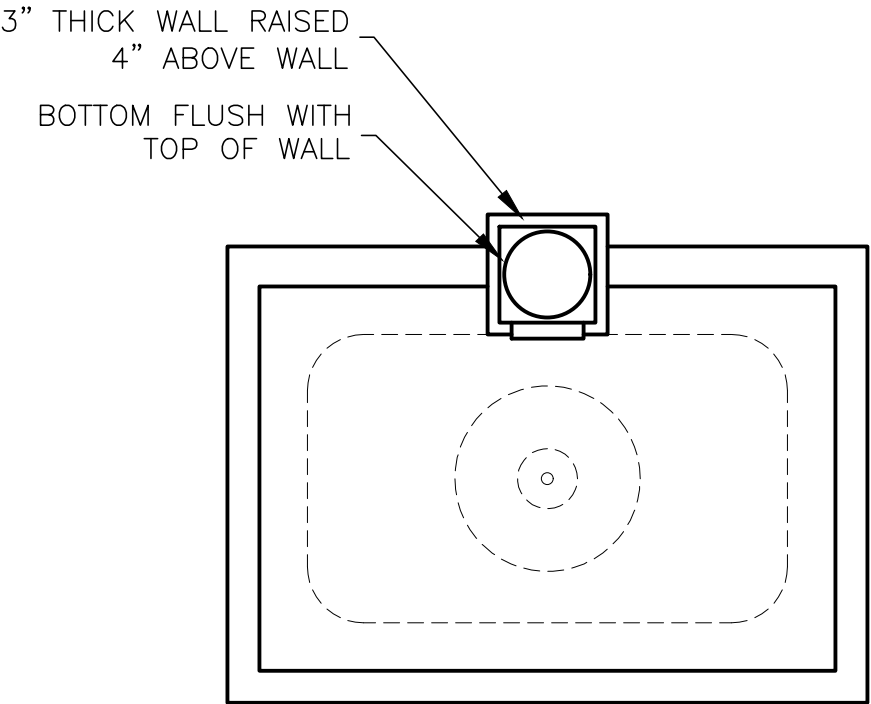
SHEET NUMBER

A1

NOTE: DASHED CONTOUR LINES ARE NOT SHELVES. THEY ARE REFERENCE POINTS TO SHOW THAT THE BOTTOM OF THE POND SLOPES TOWARD THE BOTTOM DRAIN(S). SEE BOTTOM DRAIN DETAIL FOR EXAMPLE.



7 POND CONTOUR
1/4" = 1'-0" CONCRETE PONDS ONLY



KOI POND IS APPROXIMATELY 2,700 GALLONS

POND CONTOUR
1/4" = 1'-0"

REVISIONS

DESCRIPTION

--	--



DESIGNED BY
STEVE WALKER
4670 PACIFIC STREET SUITE #200
ROCKLIN, CA 95677
(916) 345-3761
www.Sacramentokoi.com

CUSTOMER
CUSTOMER NAME

SHEET NAME

POND CONTOUR

DRAWING DATE
08-22-2022

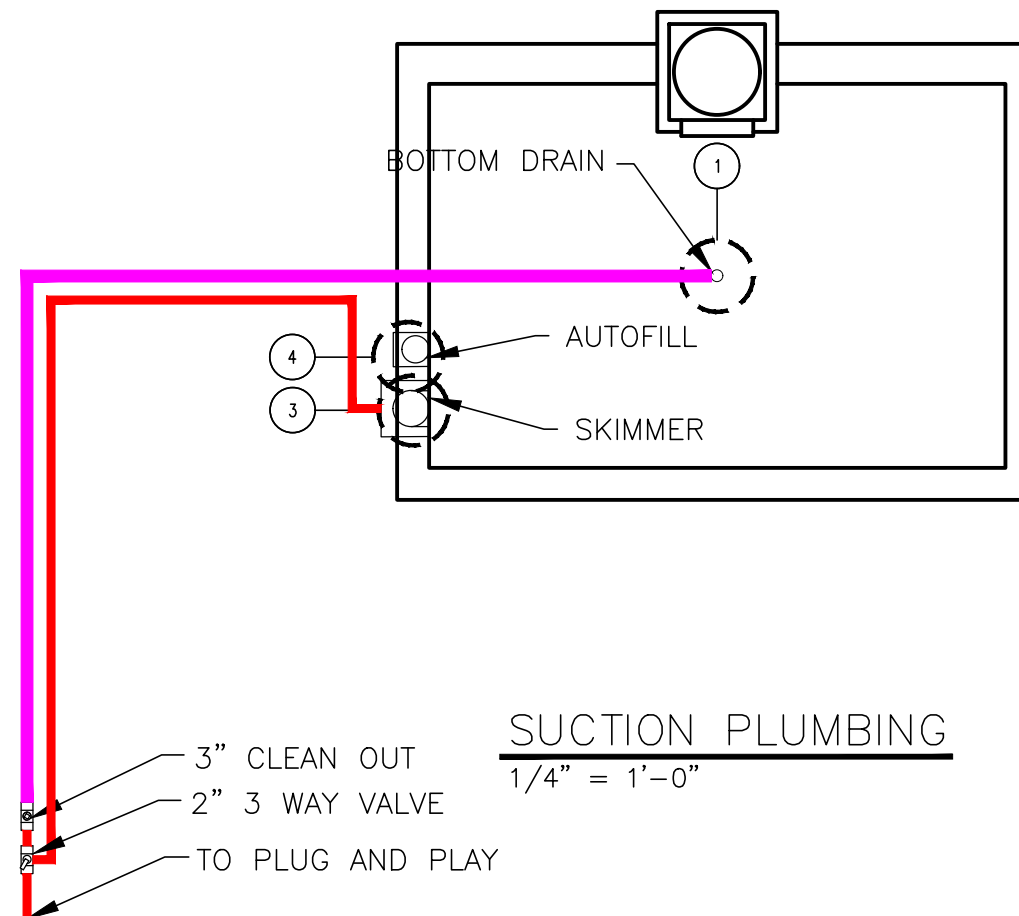
SHEET NUMBER

A2

NOTE: VALVES, STRAINER & CLEAN OUT SHOULD BE PLACED IN A DISCRETE LOCATION FOR EASY ADJUSTMENT OR SERVICING

PLUMBING LEGEND

3/4"	PLUMBING
1"	PLUMBING
1 1/2"	PLUMBING
2"	PLUMBING
2 1/2"	PLUMBING
3"	PLUMBING



REVISIONS

DESCRIPTION



DESIGNED BY
STEVE WALKER
4670 PACIFIC STREET SUITE #200
ROCKLIN, CA 95677
(916) 345-3761
www.SacramentoKoi.com

CUSTOMER
CUSTOMER NAME

SHEET NAME

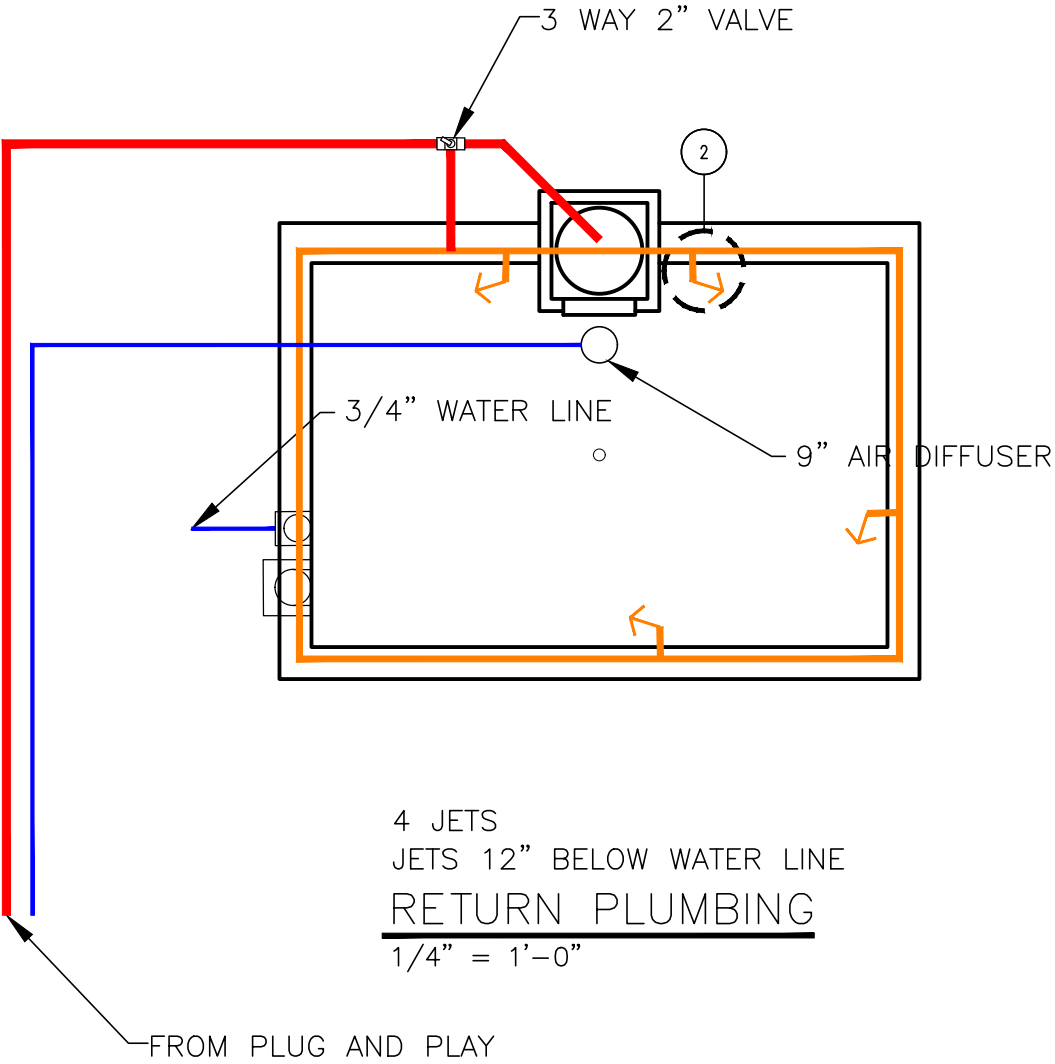
SUCTION PLUMBING

DRAWING DATE	08-22-2022
SHEET NUMBER	

A3

NOTE: VALVES, STRAINER & CLEAN OUT SHOULD BE PLACED IN A DISCRETE LOCATION FOR EASY ADJUSTMENT OR SERVICING

PLUMBING LEGEND	
3/4"	PLUMBING
1"	PLUMBING
1 1/2"	PLUMBING
2"	PLUMBING
2 1/2"	PLUMBING
3"	PLUMBING



REVISIONS

DESCRIPTION

DESIGNED BY

STEVE WALKER
4670 PACIFIC STREET SUITE #200
ROCKLIN, CA 95677
(916) 345-3761
www.Sacramentokoi.com

CUSTOMER

CUSTOMER NAME

SHEET NAME

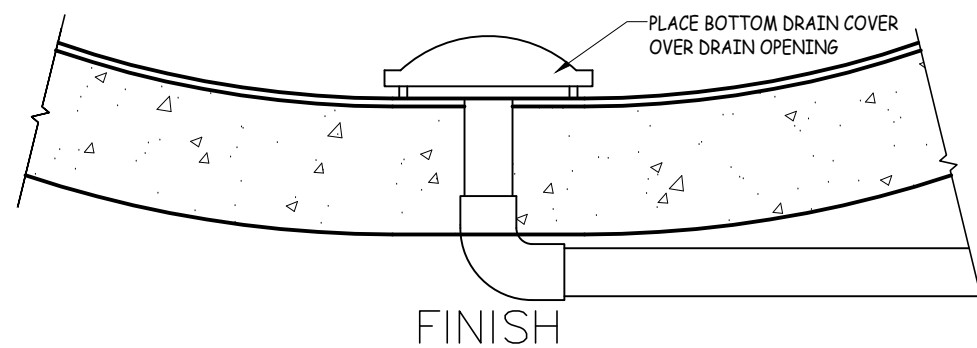
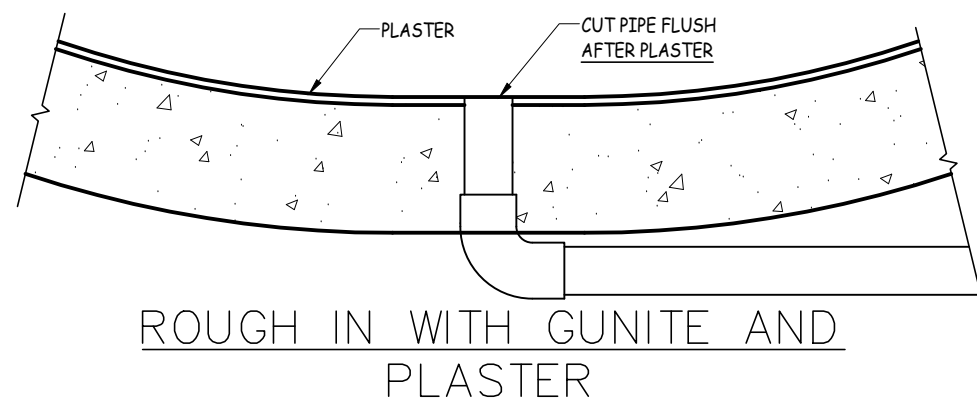
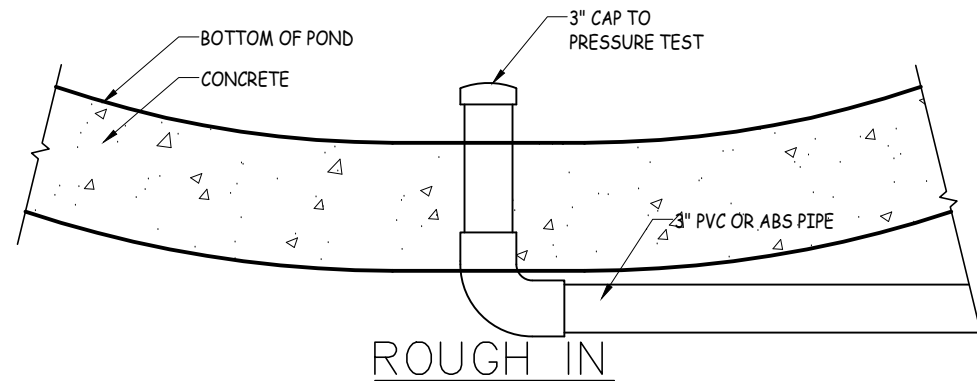
RETURN PLUMBING

DRAWING DATE

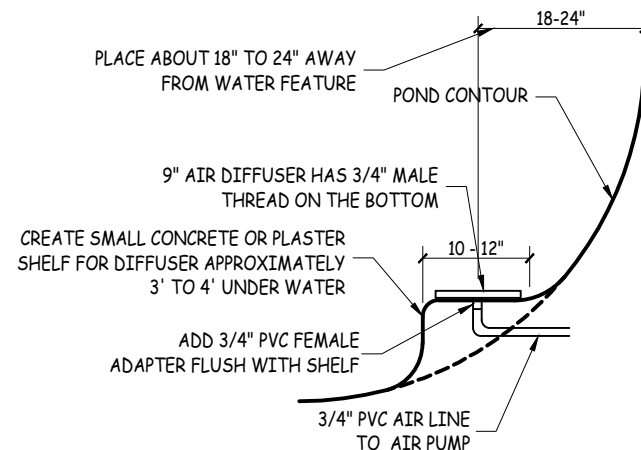
08-22-2022

SHEET NUMBER

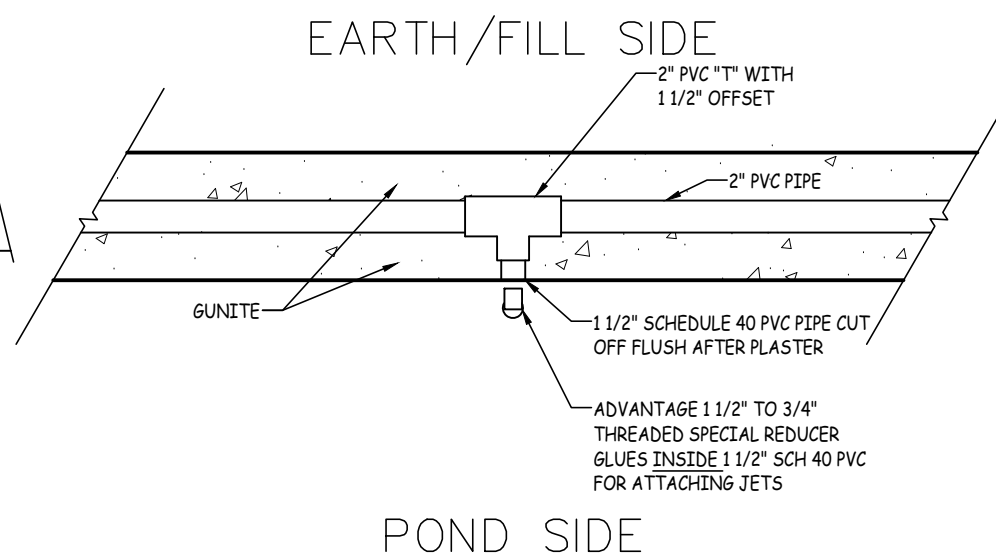
A4



1 BOTTOM DRAIN INSTALLATION
1" = 1'-0" CONCRETE PONDS ONLY

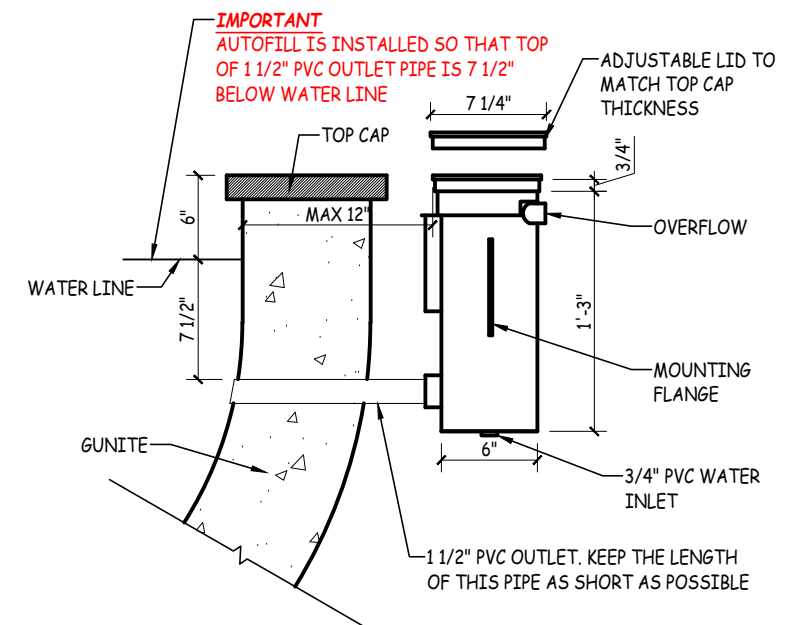


5 AIR DIFFUSER MEMBRANE
1" = 1'-0" CONCRETE PONDS ONLY

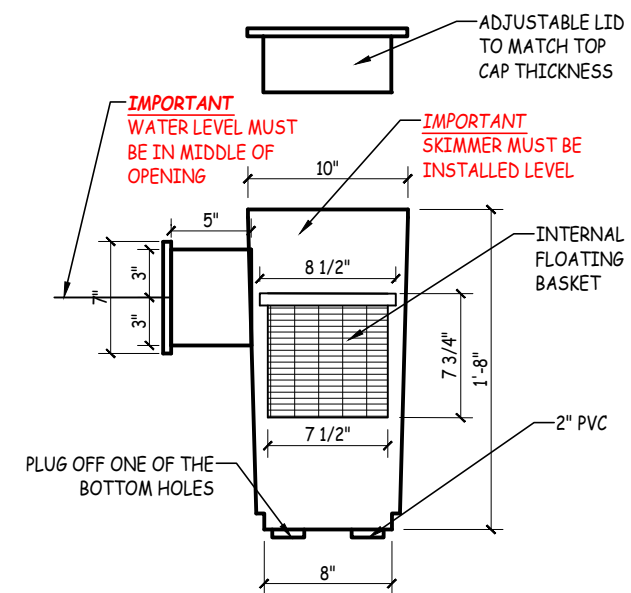


NOTE: ALL JETS ARE TO BE INSTALLED 12" BELOW THE WATER LINE
NOTE: PONDS WITH 5 OR LESS JETS YOU CAN USE 1 1/2" PVC RATHER THAN 2" PVC TO RUN JET LINES

2 JET LINE
1" = 1'-0" CONCRETE PONDS ONLY



4 AUTOFILL
1" = 1'-0" CONCRETE PONDS ONLY



3 SKIMMER
1" = 1'-0" CONCRETE PONDS ONLY

REVISIONS

DESCRIPTION

Sacramento
Koi

DESIGNED BY
STEVE WALKER
4670 PACIFIC STREET SUITE #200
ROCKLIN, CA 95677
(916) 345-3761
www.Sacramentokoi.com

CUSTOMER
CUSTOMER NAME

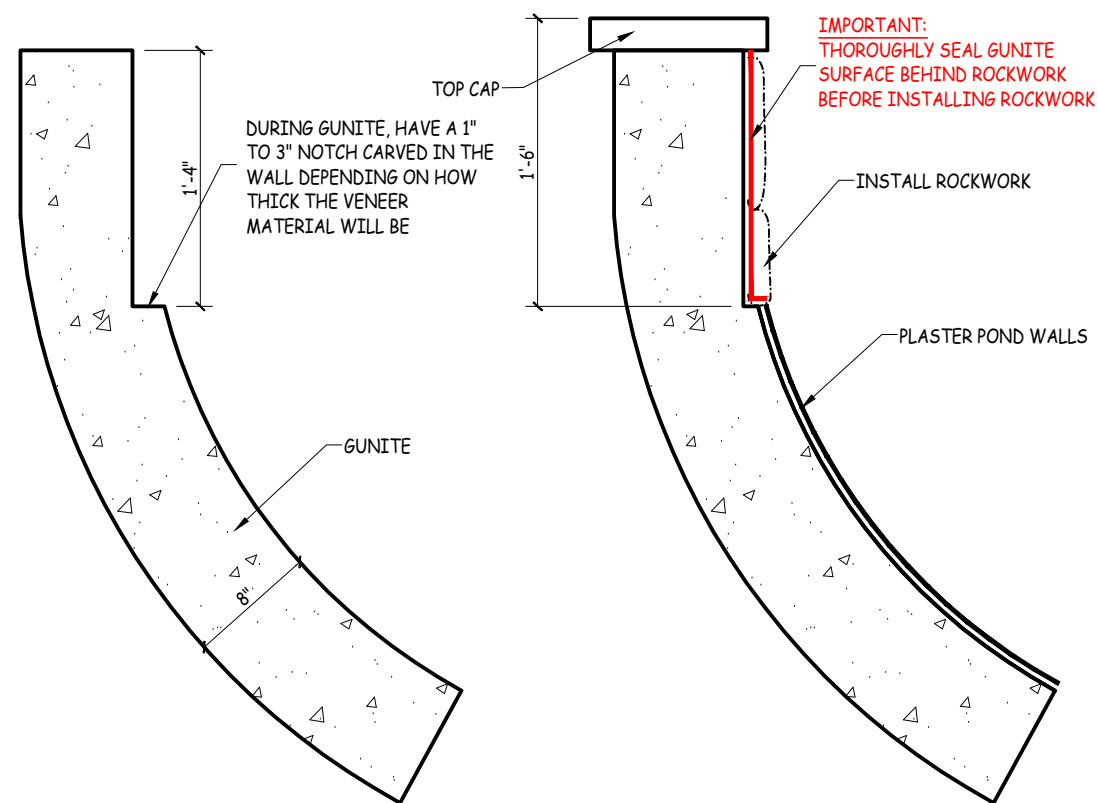
SHEET NAME

DETAILS

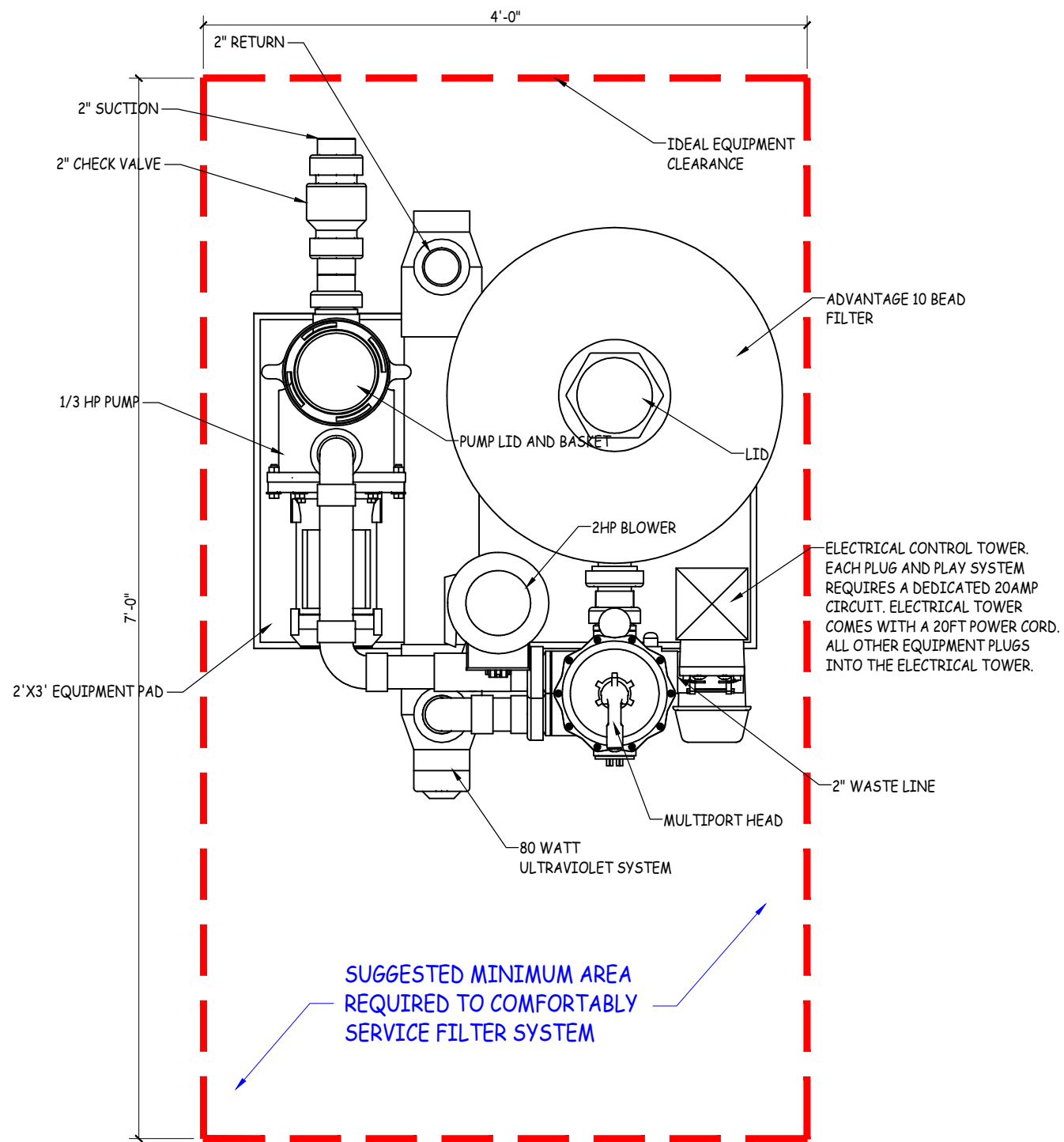
DRAWING DATE
08-22-2022

SHEET NUMBER

D1



11 FLATSTONE ROCKWORK
1" = 1'-0" CONCRETE POND ONLY



6K PLUG AND PLAY
1" = 1'-0" TYPICAL LAYOUT

REVISIONS	
DESCRIPTION	

Sacramento Koi

DESIGNED BY
STEVE WALKER
4670 PACIFIC STREET SUITE #200
ROCKLIN, CA 95677
(916) 345-3761
www.Sacramentokoi.com

CUSTOMER
CUSTOMER NAME

SHEET NAME

DETAILS

DRAWING DATE
08-22-2022

SHEET NUMBER
D2

ELECTRICAL REQUIREMENTS

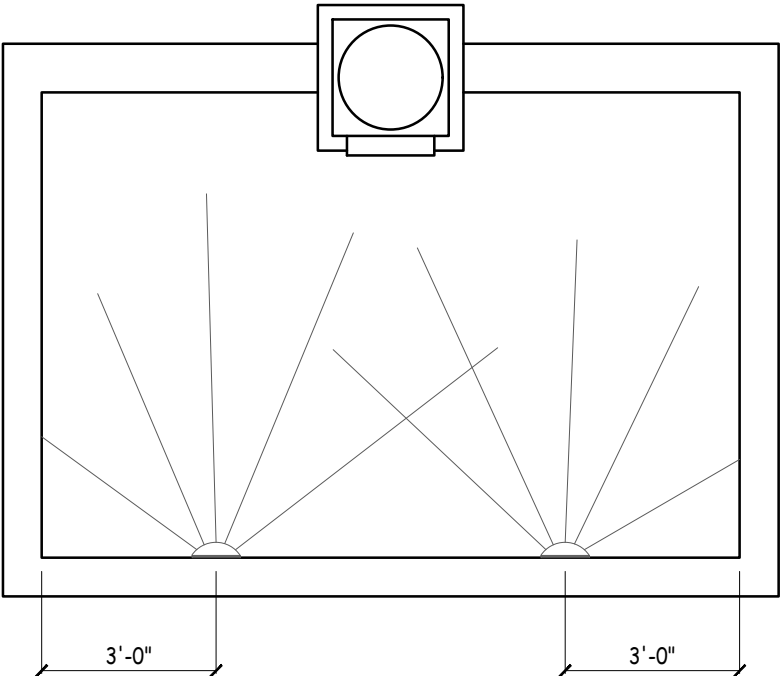
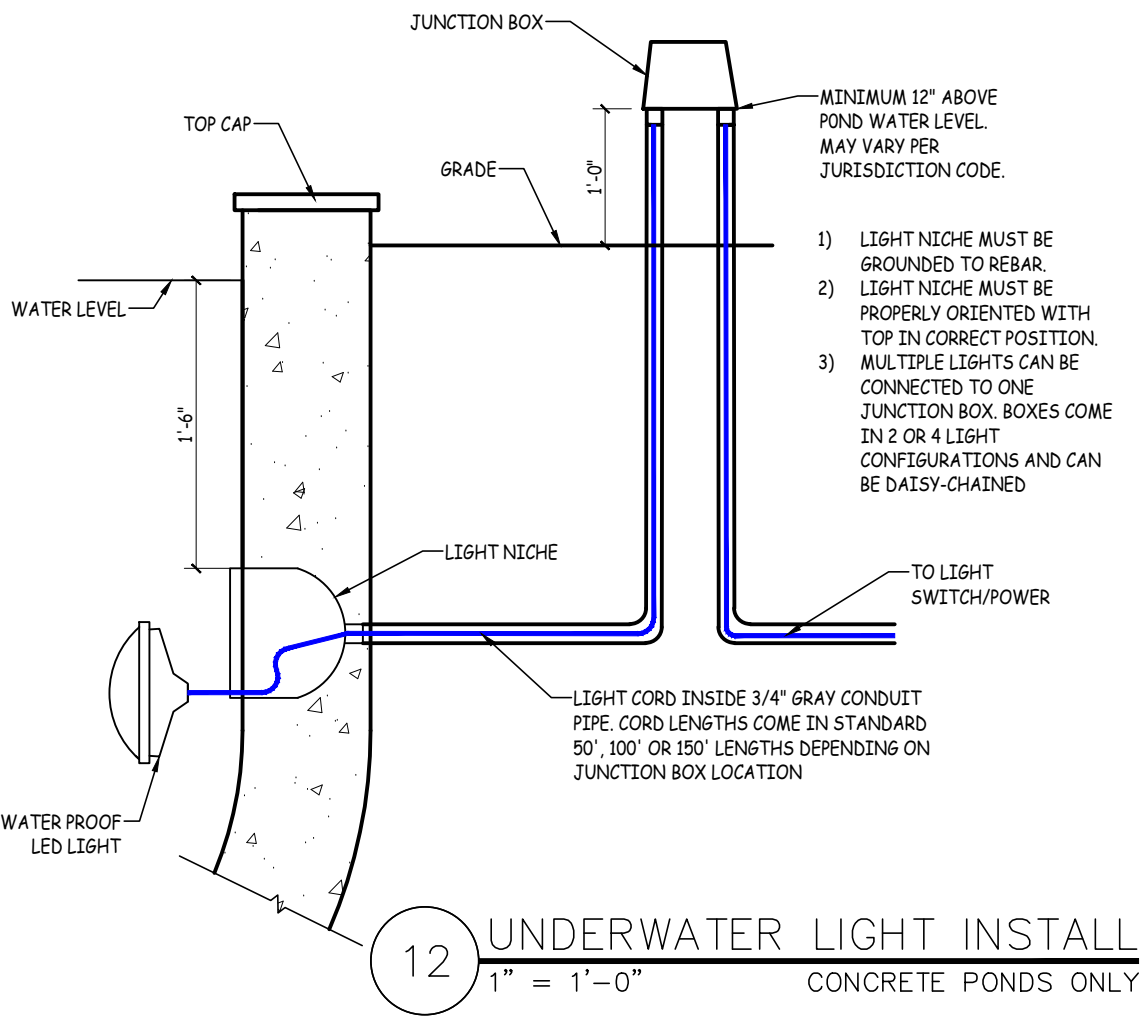
EQUIPMENT	QTY	MODEL	VOLTS	AMPS	TOTAL
PUMP	0	ARTESIAN II 1/4 HP	110	2.60	
	1	ARTESIAN II 1/3 HP	110	3.40	3.40
	0	ADVANTAGE 1/2 HP	110	6.70	
	0	SPARUS VARIABLE	220	11.03	
UV LIGHT	0	EA 40 WATT	120	0.70	
	1	EA 80 WATT	120	1.03	1.03
	0	EA 120 WATT	120	1.03	
AIR PUMP	1	ALITA 40	120	0.39	0.39
	0	ALITA 60	120	0.50	
	0	ALITA 80	120	0.70	
UNDER WATER LIGHTS	0	INTELLIBRITE 100 WATT	120	0.15	
	0	INTELLIBRITE 300 WATT	120	0.34	
	2	INTELLIBRITE 500 WATT	120	0.46	0.92
GROW SYSTEM	0	STANDARD	120	0.53	

TOTAL AMPS 5.74

FILTER BLOWER*	1	ADVANTAGE BLOWER	120	8.40	8.40
----------------	---	------------------	-----	------	------

*NOTE: THE ADVANTAGE FILTER BLOWER IS ONLY USED ONCE OR TWICE A WEEK FOR UP TO 2 MINUTES AT A TIME WHILE BACKWASHING THE FILTER SYSTEM. ADDITIONALLY, THE WATER PUMP SHOULD ALWAYS BE TURNED OFF WHEN THE BLOWER IS TURNED ON.

2 X 10” 500 WATT PENTAIR INTELLIBRITE
ALL WHITE 5G LIGHTS TO BE INSTALLED
18” BELOW WATER LEVEL



REVISIONS

DESCRIPTION

Sacramento Koi

DESIGNED BY
STEVE WALKER
4670 PACIFIC STREET SUITE #200
ROCKLIN, CA 95677
(916) 345-3761
www.Sacramentokoi.com

CUSTOMER
CUSTOMER NAME

SHEET NAME
ELECTRICAL

DRAWING DATE
08-22-2022

SHEET NUMBER
E1