

SHEET INDEX

- CS0 COVER SHEET & 3D MODEL
- A1 POND DIMENSIONS, CONTOUR & PLUMBING
- D1 DETAILS
- E1 ELECTRICAL

REVISIONS

NO.	DESCRIPTION



DESIGNED BY
 STEVE WALKER
 4670 PACIFIC STREET SUITE #200
 ROCKLIN, CA 95677
 (916) 390-3773
 www.SacramentoKoi.com

CUSTOMER
 CUSTOMER NAME
 STREET
 CITY, STATE ZIP

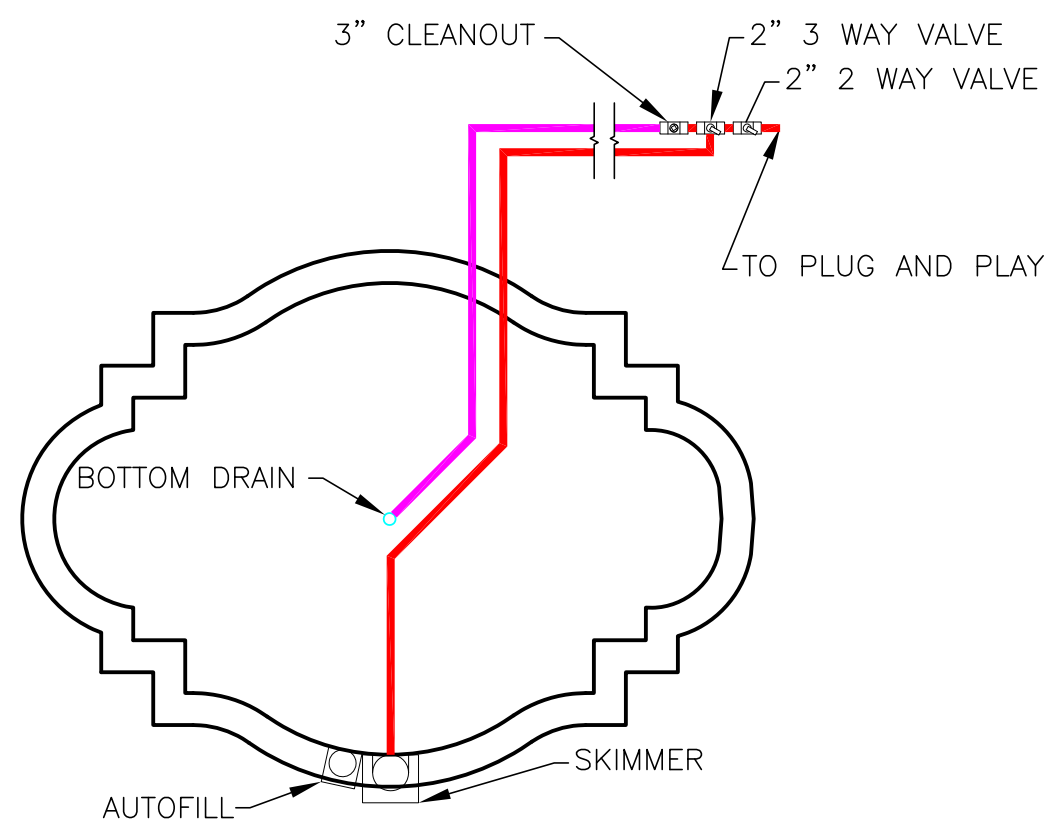
SHEET NAME
**COVER SHEET &
 3D RENDERING**

DRAWING DATE
 XX-XX-2019
 SHEET NUMBER

CS1

ALL KOI POND PLANS ARE THE SOLE INTELLECTUAL PROPERTY OF SACRAMENTO KOI AND MAY NOT BE REPRODUCED FOR ANY OTHER REASON THAN PERSONAL USE WITHOUT THE WRITTEN CONSENT OF SACRAMENTO KOI.

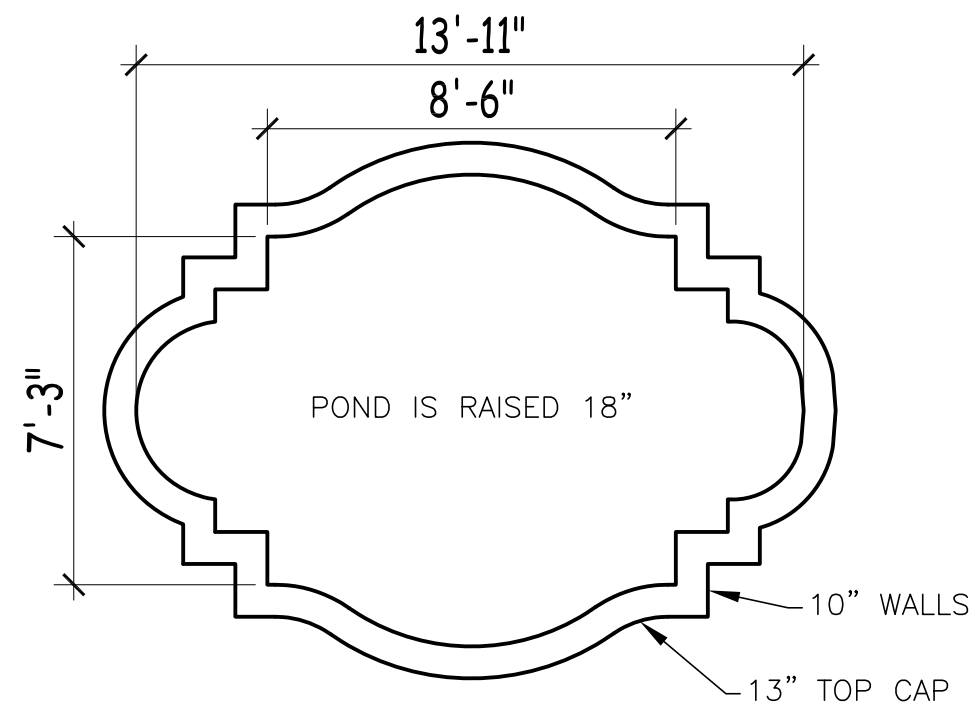
VALVES TO BE AT EQUIPMENT LEVEL
5' BELOW POND



SUCTION PLUMBING

1/4" = 1'-0"

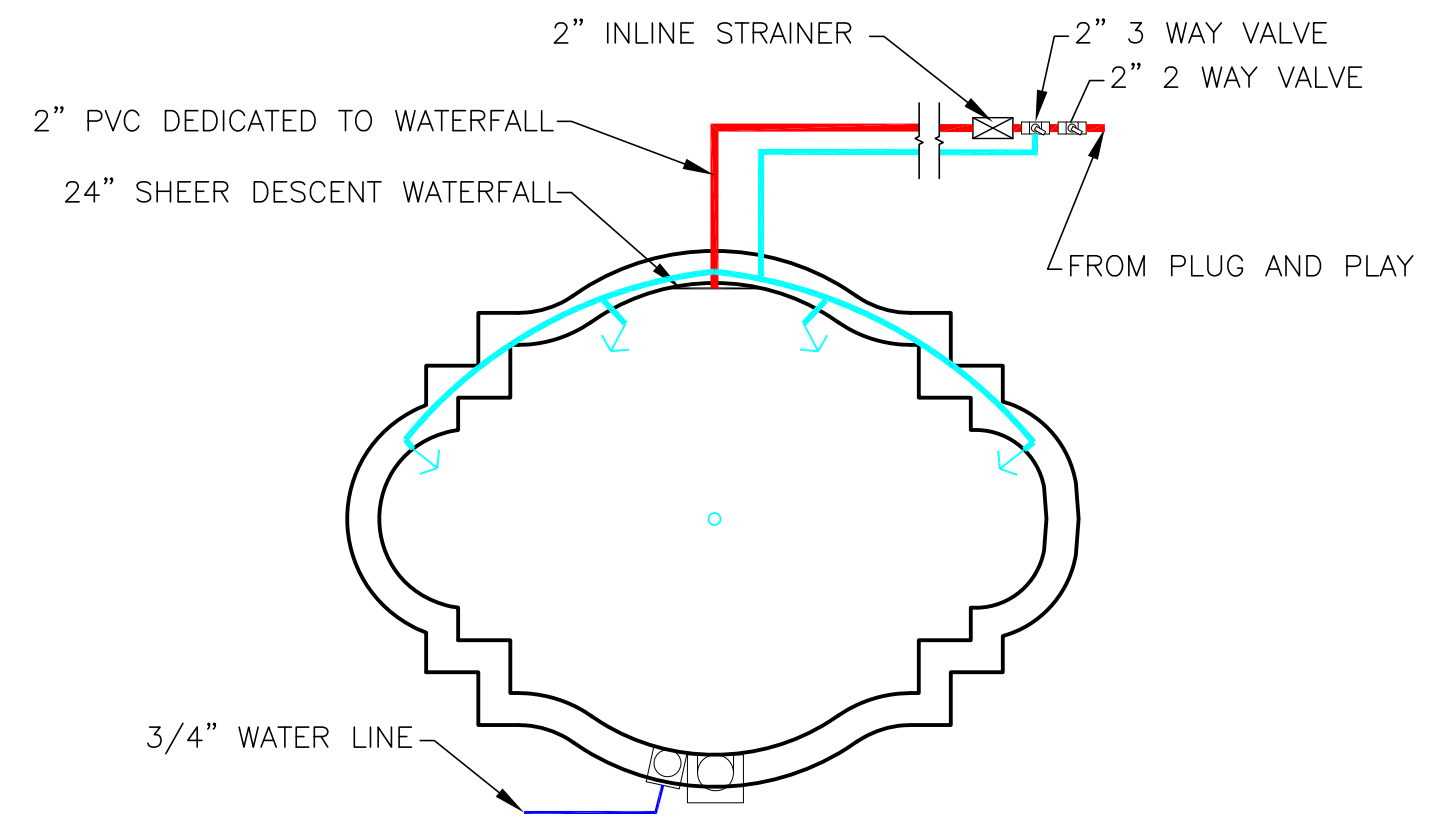
APPROXIMATELY 3,500 GALLONS



POND DIMENSIONS

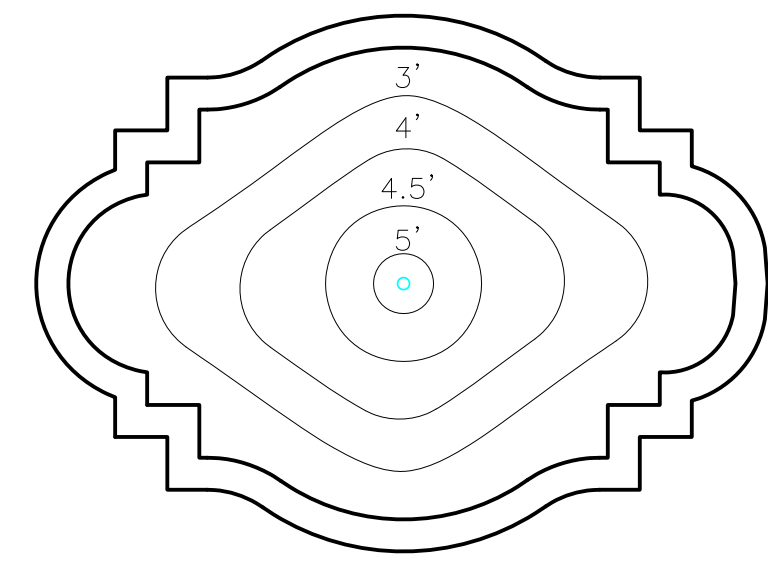
1/4" = 1'-0"

4 JETS
JETS 12" BELOW WATER LINE



RETURN PLUMBING

1/4" = 1'-0"

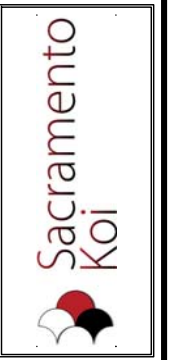


POND CONTOUR

1/4" = 1'-0"

- 3/4" PLUMBING
- 1" PLUMBING
- 1 1/2" PLUMBING
- 2" PLUMBING
- 2 1/2" PLUMBING
- 3" PLUMBING

REVISIONS	DESCRIPTION



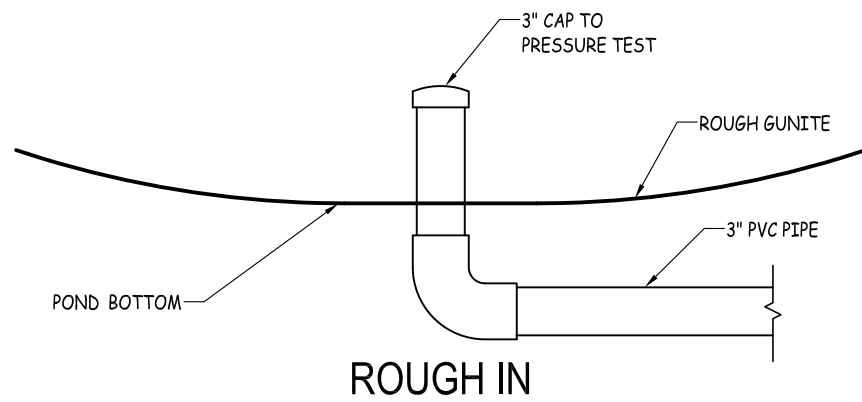
DESIGNED BY
STEVE WALKER
4670 PACIFIC STREET SUITE #200
ROCKLIN, CA 95677
(916) 390-3773
www.SacramentoKoi.com

CUSTOMER
CUSTOMER NAME
STREET
CITY, STATE, ZIP

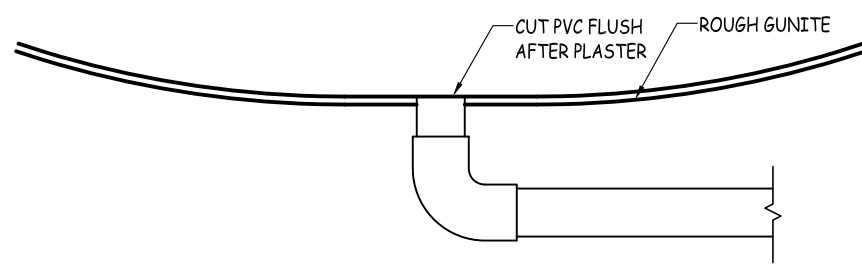
SHEET NAME
**POND DIMENSIONS,
CONTOUR &
PLUMBING**

DRAWING DATE
XX-XX-2019

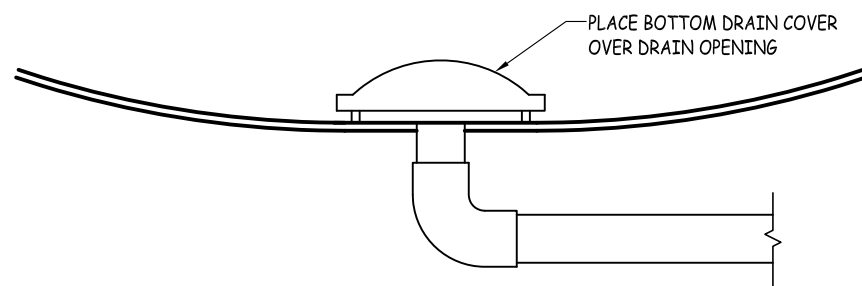
SHEET NUMBER
A1



ROUGH IN

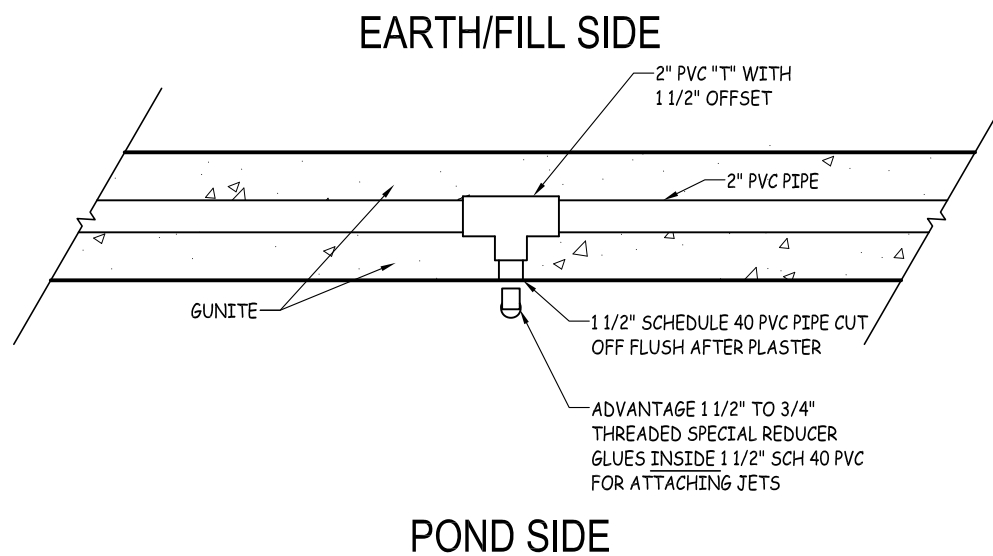


ROUGH IN WITH GUNITE



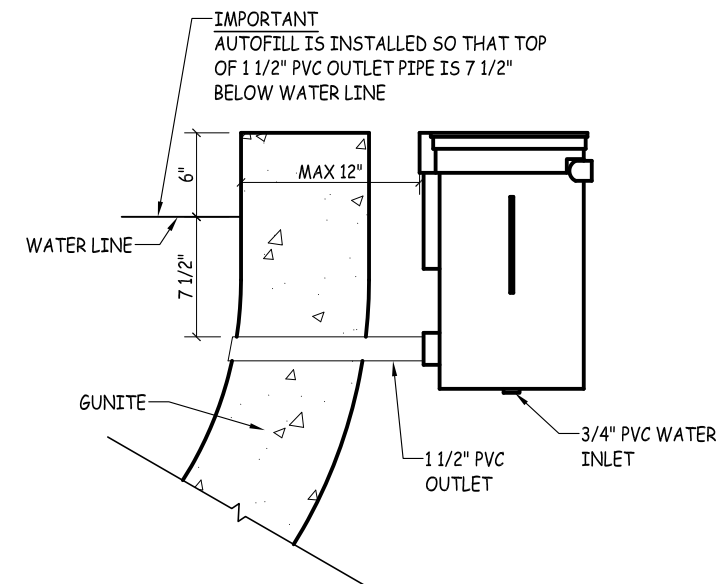
FINISH

1 BOTTOM DRAIN
1" = 1'-0" CONCRETE PONDS ONLY

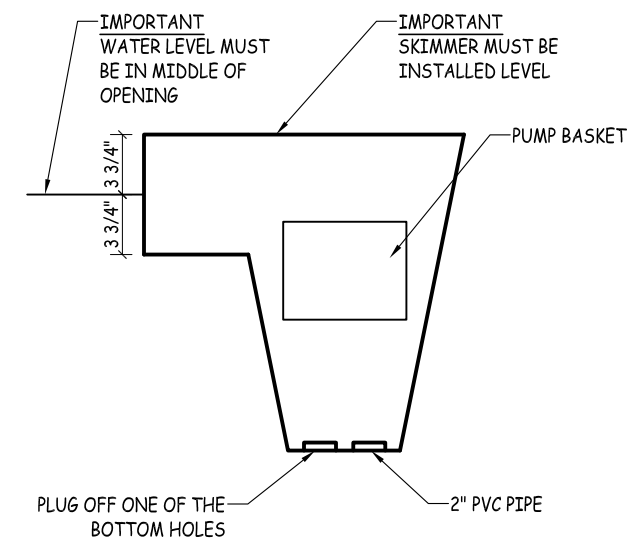


NOTE: ALL JETS ARE TO BE INSTALLED 12" BELOW THE WATER LINE
NOTE: PONDS WITH 5 OR LESS JETS YOU CAN USE 1 1/2" PVC RATHER THAN 2" PVC TO RUN JET LINES

2 JET LINE
1" = 1'-0" CONCRETE PONDS ONLY



4 AUTOFILL
1" = 1'-0" CONCRETE PONDS ONLY



3 SKIMMER
1" = 1'-0"

REVISIONS	
DESCRIPTION	

Sacramento Koi

DESIGNED BY
STEVE WALKER
4670 PACIFIC STREET SUITE #200
ROCKLIN, CA 95677
(916) 390-3773
www.SacramentoKoi.com

CUSTOMER
CUSTOMER NAME
STREET
CITY, STATE ZIP

SHEET NAME

DETAILS

DRAWING DATE
XX-XX-2019

SHEET NUMBER

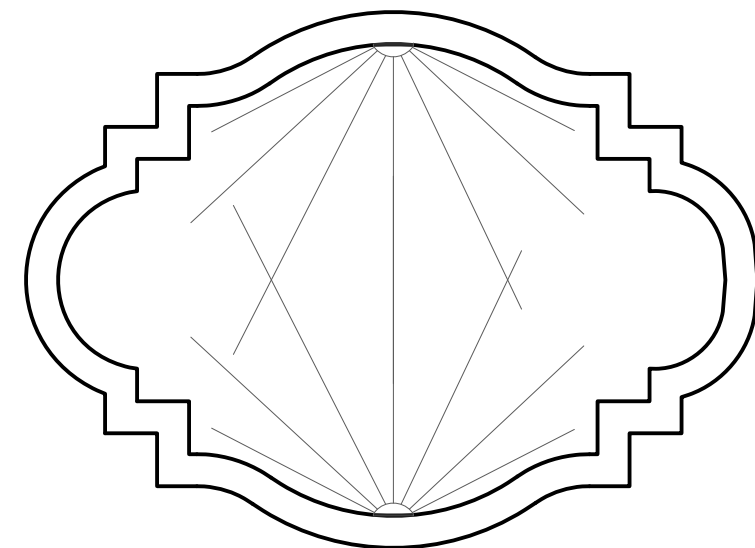
D1

ELECTRICAL REQUIREMENTS

EQUIPMENT	QTY	MODEL	VOLTS	AMPS	TOTAL
PUMP	0	ARTESIAN II 1/4 HP	110	2.60	
	1	ARTESIAN II 1/3 HP	110	3.40	3.40
	0	ADVANTAGE 1/2 HP	110	6.70	
	0	INTELLIFLO VSF/SPARUS	240	16.00	
UV LIGHT	0	EA 40 WATT	120	0.70	
	1	EA 80 WATT	120	1.03	1.03
	0	EA 120 WATT	120	1.03	
AIR PUMP	0	ALITA 40	120	0.39	
	0	ALITA 60	120	0.50	
	0	ALITA 80	120	0.70	
UNDER WATER LIGHTS	0	INTELLIBRITE 100 WATT	120	0.15	
	0	INTELLIBRITE 300 WATT	120	0.34	
	2	INTELLIBRITE 500 WATT	120	0.46	0.92
GROW SYSTEM	0	STANDARD	120	0.53	
TOTAL AMPS					5.35
FILTER BLOWER*	1	ADVANTAGE BLOWER	120	8.40	8.40

*NOTE: THE ADVANTAGE FILTER BLOWER IS ONLY USED ONCE OR TWICE A WEEK FOR UP TO 2 MINUTES AT A TIME WHILE BACKWASHING THE FILTER SYSTEM. ADDITIONALLY, THE WATER PUMP SHOULD ALWAYS BE TURNED OFF WHEN THE BLOWER IS TURNED ON.

2 X 10" PENTAIR INTELLIBRITE ALL WHITE 5G LIGHTS

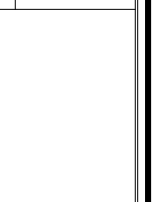


ELECTRICAL

1/4" = 1'-0"

REVISIONS

DESCRIPTION



DESIGNED BY
 STEVE WALKER
 4670 PACIFIC STREET SUITE #200
 ROCKLIN, CA 95677
 (916) 390-3773
 www.SacramentoKoi.com

CUSTOMER
 CUSTOMER NAME
 STREET
 CITY, STATE ZIP

SHEET NAME

ELECTRICAL

DRAWING DATE
 XX-XX-2019

SHEET NUMBER
E1