



Sacramento Koi

INSTALLATION & USER'S GUIDE



Advantage Concrete Skimmer

Model: ADVT-SKIM-C

Revision Date: 06/18/2024

INSTALLATION & USER'S GUIDE	1
POND SKIMMER LAYOUT AND SUCTION LINE SIZING	3
INSTALLATION	4
MAINTENANCE	8
TROUBLESHOOTING	9
PARTS LIST	10
WARRANTY	11
TECHNICAL SUPPORT	11
NOTES	12

POND SKIMMER LAYOUT AND SUCTION LINE SIZING

1. Use one skimmer per 500 square feet of pond surface area. Suction line sizes are based on a water velocity of less than seven feet per second. Since building codes vary, check your local building code before installing pond and skimmers.
2. Suction line sizes for each section of piping must allow for the total number of skimmers feeding that section of the line.
3. For good hydraulic balance, divide skimmers as equally as possible between the main branches of the piping layout.

INSTALLATION

NOTICE: Skimmer MUST be surrounded by at least 4" of structural concrete in a monolithic pour, using a cold joint as shown in installation drawings (Figure 1).

Line Connections and Testing: Connect pump inlet line to rear port in bottom manifold (Figure 2). Skimmer is ABS plastic. For threaded connections, do not use pipe dope; to seal joint use threaded seal tape for slip connections, apply PVC primer to PVC pipe only. Then apply ABS to PVC solvent cement to both pipe and slip connections. Consult dealer for correct solvent cement for pipe used. Assemble joint per cement manufacturer's instructions. Allow at least three (3) hours before pressure testing.

Plastic cements and primers can be flammable, poisonous, or both. Closely follow cement manufacturer's instructions when using plastic cement.

1. Assemble piping and pipe fittings to skimmer. All piping must conform to current local and state plumbing and sanitary codes.
2. Long pipe runs and elbows restrict water flow. For best efficiency, use the fewest possible fitting and large diameter pipe (1-1/2" for 1-1/2" skimmers and 2" for 2" skimmers).

CAUTION: When using threaded plastic pipe fittings for skimmer hook up, use only silicone sealant and hand tighten fittings plus 1-1/2 turns MAXIMUM. DO NOT OVER-TIGHTEN.

CAUTION: WHEN GLUING PVC PIPE INTO AN ABS SKIMMER, YOU MUST USE THE PRIMER AS RECOMMENDED BY THE GLUE MANUFACTURER. THIS WILL ENSURE PVC TO ABS CEMENT COMPATIBILITY AND A LEAK FREE JOINT.

3. Seal off any used skimmer ports with O-ring styled plugs. Tighten plugs until the O-ring contacts the skimmer and then turn an additional 1/4 turn. HAND TIGHTEN ONLY!

CAUTION: Over-tightening the drain plug may result in failure of the drain plug or the skimmer body and will not be covered under the terms of the Limited Warranty.

CAUTION: For sealing skimmer ports, use only the plugs and O-rings provided (Items 7, 8 -

see parts). DO NOT use tapered metal plugs as this will void manufacturer's warranty. If skimmer must be bypassed for line pressure testing, use only commercially available test kits with O-ring sealing provisions.

- 4. Support skimmer securely in position. Support locators on bottom of skimmer; allow 1-1/2" or 2" PVC pipe to be used as a support. The deck ring collar has a friction fit that allows 1-3/4" of vertical adjustment. Additional collars may be stacked upon each other to accommodate desk height as needed.

CAUTION: Ensure piping is adequately supported on undisturbed earth. If additional backfilled and tamping is necessary, do not stress pipe or skimmer port by lifting or moving pipe after skimmer port connections have been made.

- 5. Structural gunite/concrete should be applied in a monolithic pour, in conjunction with a cold joint as shown in Figure 1.

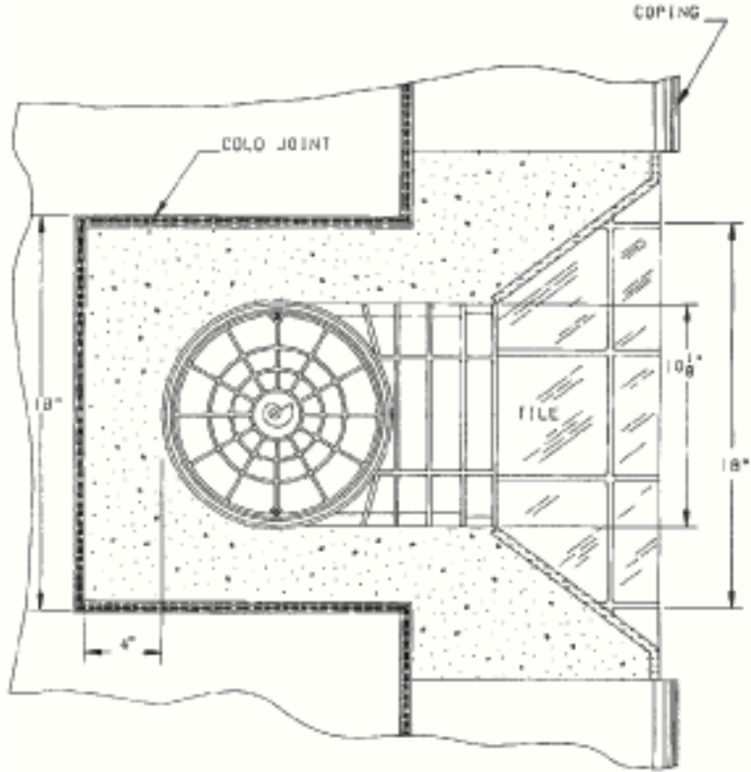


Figure 1: Top View

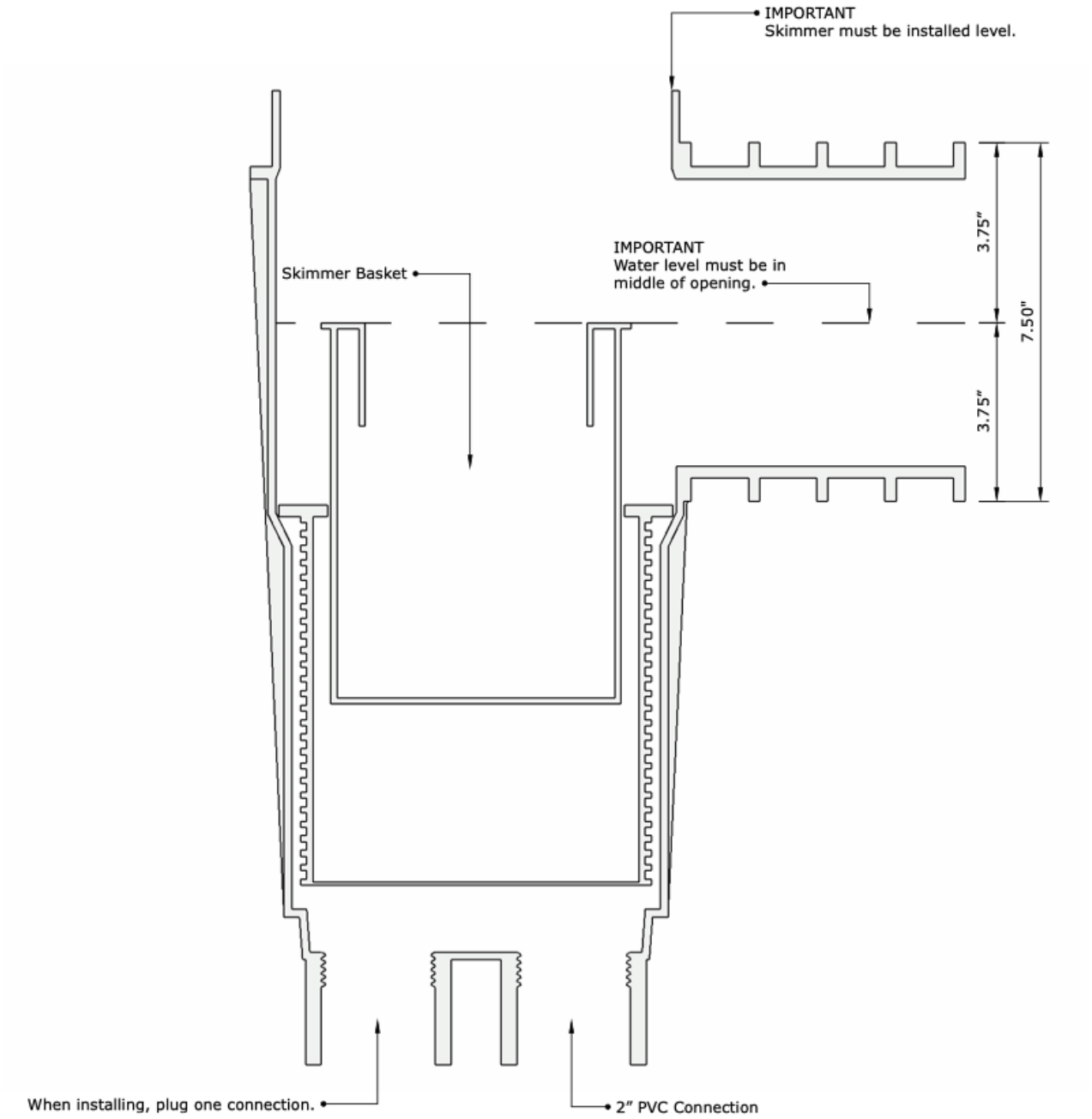


Figure 2: Side View

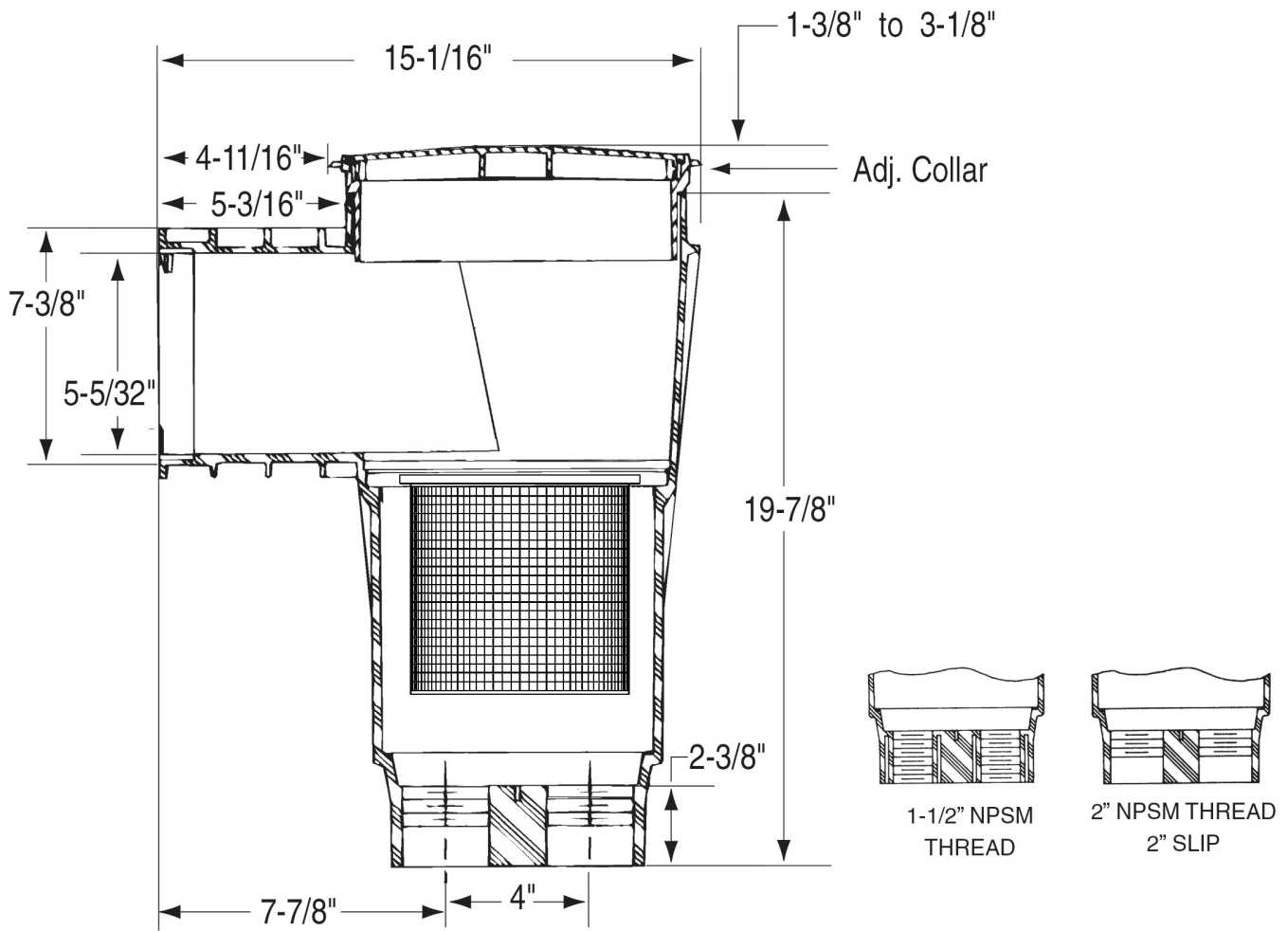


Figure 3: Dimensions

MAINTENANCE

Weir: Periodically check weir for free operation. Replace if damaged or worn.

Strainer Basket: Check strainer basket every few days for accumulated leaves, debris, etc. Empty basket as required.

Water Level: Maintain water level at least 1½” to 2” above bottom of skimmer opening for proper operation.

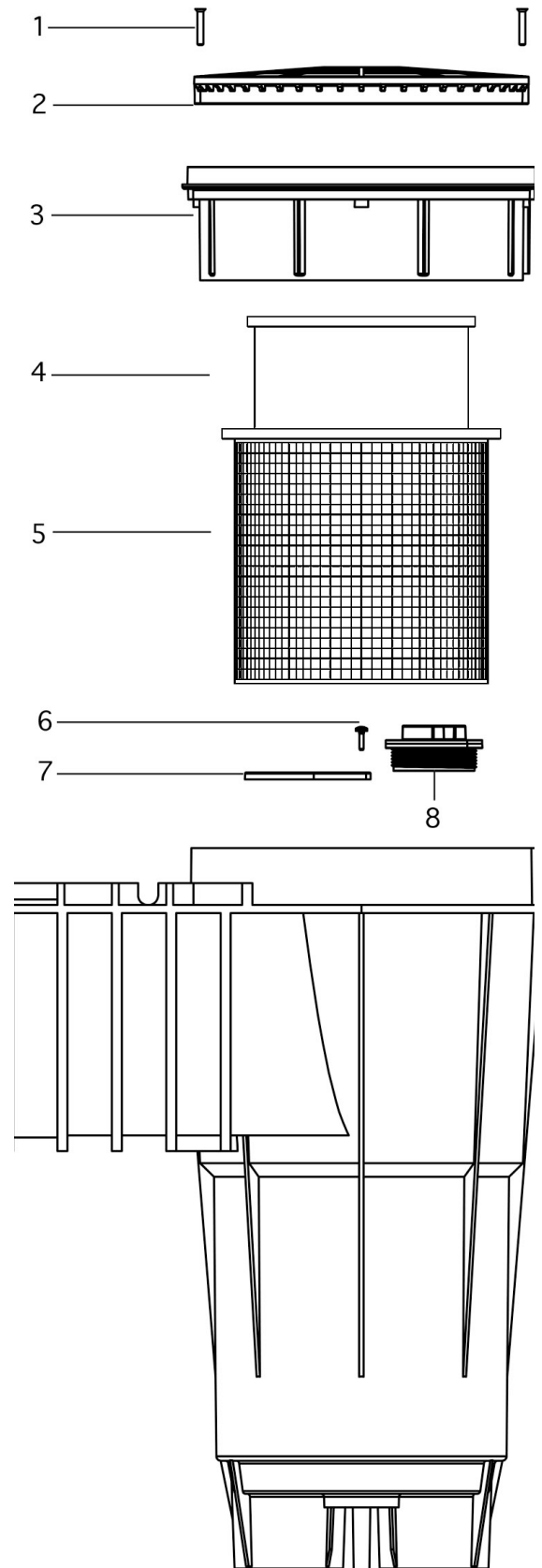
Winterizing: Drain pond until level is below skimmer inlet. Remove lid, basket and float weir. Plug both bottom ports with standard 1½” or 2” pipe plugs (see item 7 and 8 in parts list on page 10. Cover skimmer to prevent rainwater or snow accumulation. Falling and tripping hazard. Skimmer grate may deteriorate with prolonged use. Cover must be flush with pond, spa, or hot tub deck level. Skimmer is made of impact and weather resistant materials, but extended use (5-7 years) may lead to reduced strength. Regularly check condition of skimmer cover. Look for cracks, chips, deterioration of plastic, etc. If any sign of damage or deterioration is found.

TROUBLESHOOTING

Problem	Cause	Solution
Pond surface not clean, inadequate skimming effect.	1. Skimmer basket obstructed.	Clean skimmer basket.
	2. Incorrect pond water level.	Raise/lower pond water level to recommended heights.
	3. Inadequate pond water circulation.	Position pond water return fittings to increase surface circulation.
Pond surface clean, bottom dirty.	1. Main drain obstructed.	Clean main drain. Remove obstruction from main drain line.
	2. Inadequate pond water circulation.	Increase water suction from main drain line(s).
Air returning to pond.	1. Low pond water level.	Raise pond water level to recommended height.

PARTS LIST

Item No.	Product Number	Description	Qty.
1	516242	SCREW, #8-32 X 1" SS	2
2	516306	DECK LID, BLACK	1
3	516329	DECK COLLAR, GUNITE, BLACK	1
4	R38013B	FLOAT WEIR	1
5	R38013AZ	BASKET	1
6	516243	SCREW, #8-1/2" SS	1
7	516228	TRIMMER PLATE	1
8	195853	2" O-RING STYLE PLUG	1



Illustrated Parts View

WARRANTY

2 year warranty.

This warranty does not cover damage due to freezing or “acts of God” such as flooding, tree falling, etc.

This warranty is strictly limited to either the repair or the replacement cost of any products we sell. This includes the sale of equipment, products and/or koi. There is no implied warranty beyond this statement.

Contact Sacramento Koi for authorization before returning any product. Partial returns that cause the original order to no longer qualify for free shipping will be subject to the original shipping cost.

TECHNICAL SUPPORT

Hours: Monday - Friday 8:30am - 4:30pm PST

Phone: (916) 652-4231

Email: info@sacramentokoi.com

Website: www.sacramentokoi.com

NOTES